



PCIe VoIP Cards

VoIP Gateway in the form factor PCI Express

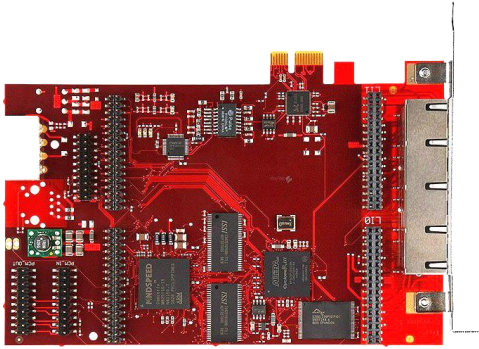


“These cards are very easy to install, function perfectly and guarantee our customers even more stable fax transmissions and optimal audio quality thanks to echo suppression.”

Karsten Wemheuer, CEO of IPTAM

OVERVIEW

beronet PCIe VoIP cards are full-fledged VoIP Media Gateways and can be equipped with up to two modules. The cards are ideal for manufacturers of telephone systems, telephony appliances, fax appliances, unified communication appliances as well as hybrid systems. Due to their driver free design, they are the preferred solution of OEM Partners.



VoIP Gateway in the form factor PCI Express

The beroNet PCIe VoIP cards are full-fledged VoIP Media Gateways in the form factor PCI Express. They are modular and can be equipped with up to two modules. Digital ISDN (BRI / PRI) and analog (FXS / FXO) are available.

Base Models

EXPANDABLE WITH ADDON MODULES

Model	NIC	Module Slots Available	Max Concurrent Channels	Max Concurrent SIPtoSIP Sessions Transparent / Transcoding
BF400e	1	2	16	128 / 8
BF1600e	1	2	64	128 / 32
BF6400e	1	2	128	128 / 64

Standard Configurations

EXPANDABLE WITH ADDON MODULES

Model	Interface	Description	Concurrent PSTN Channels / from	Additional Module Slots Available
BF4004FXOe	Analog	4 FXO modular VoIP PCIe Card	4	1
BF4004FXSe	Analog	4 FXS modular VoIP PCIe Card	4	1
BF4002S02FXSe	Analog / ISDN	2 BRI and 2 FXS modular VoIP PCIe Card	6	1
BF4004S0e	ISDN	4 BRI HPC modular VoIP PCIe Card	8	1
BF16001E1e	ISDN	1 PRI E1 HPC modular VoIP PCIe Card	30	1



Cloud Managed



Compatible with any IPBX



Fast Installation



Tough, no moving parts



Energy Efficient



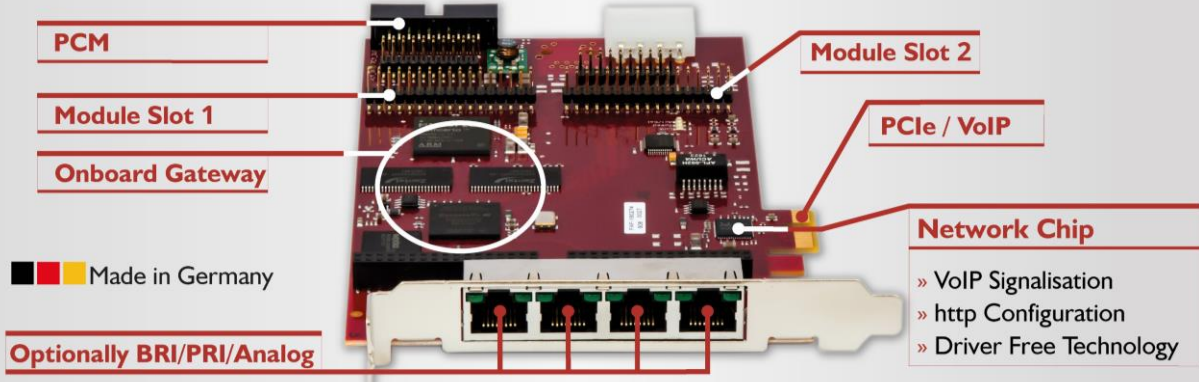
Modular & Flexible



100% Silent



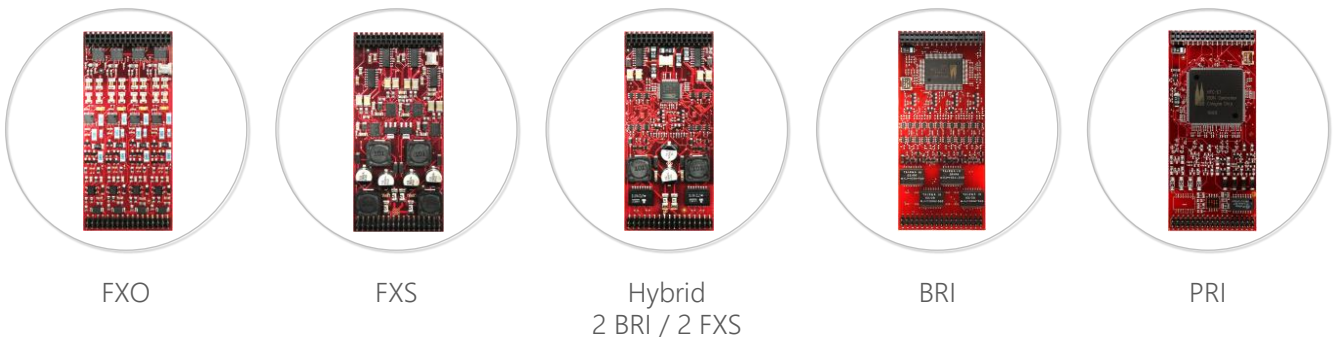
Easy Expandable



Modular technology for control and flexibility

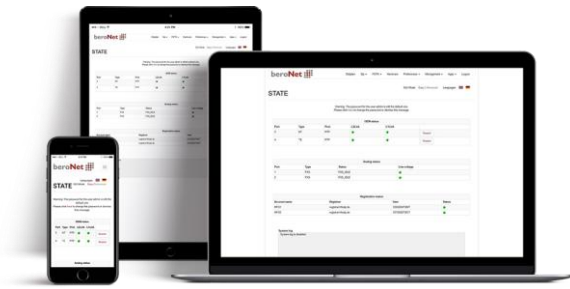
beronet Gateway’s modular design enables this device to meet any unique need. Modular VoIP technology increases adaptability and flexibility by allowing you to change the modules instead of the entire device if it is needed for a different VoIP installation.

Modular beronet VoIP PCIe Cards can be equipped with up to two modules. Analog (FXS/FXO) and digital ISDN (BRI/PRI) are available and can be combined. Thanks to their flexibility the beronet VoIP PCIe Cards always offer the right solution for different customer requirements.



beronet Addon Modules

Interface	Model	Description
Analog	BNMO-4FXO	adds 4 FXO ports
Analog	BNMO-4FXS	adds 4 FXS ports
Analog / ISDN	BNMO-2HYB	adds 2 FXS and 2 BRI ports
ISDN	BNMO-4BRI	adds 4 BRI ports with High Precision Clock for DECT
ISDN	BNMO-1E1	adds 1 PRI E1 port with High Precision Clock for DECT
ISDN	BNMO-2E1	adds 2 PRI E1 ports with High Precision Clock for DECT
ISDN	BNMO-1PRI	adds 1 PRI T1/E1 port with High Precision Clock for DECT
ISDN	BNMO-2PRI	adds 2 PRI T1/E1 ports with High Precision Clock for DECT



Powered by beroNet OS

beronet OS allows you to easily configure your VoIP Card via an intuitive web interface, to directly provision your devices with XML and to register it in the beroNet Cloud for remote monitoring and management. Take advantage of a deep range of intelligent and customizable features. Work smarter, not harder.

General Specifications

- No drivers or API needed: System detects card as Realtek Network Card
- Interface for the card is SIP
- Compatible with any PBX
- Two module slots (PRI, BRI, FXO, FXS, hybrid)
- G.711 and echo cancellation, (up to: 16 channels with BF400, 64 channels with BF1600, 128 channels with BF6400)
- G.723.1 and Annex A, G.729 a/b, G.726, (up to: 4 channels with BF400, 16 channels with BF1600, 64 channels with BF6400)
- G.168/G.165 echo cancellation with echo path change detection, up to 128ms
- T.38 Fax Relay (V.27, V.29 and V.17) (up to: 4 channels with BF400, 16 channels with BF1600, 32 channels with BF6400)
- Voice activity detection /comfort noise generation
- DTMF digit detection and generation
- SIP over UDP/TCP with optional TLS 1.2 support
- SIP user agent IETF RFC3261 compliant
- "TDM Bridging" of two beroNet Cards via PCM Bus
- PCI 2.2 conform 3,3V (Realtek 8139CL Chipsatz), 5V Slot compatible, min. 3,3V
- PCI express 1.1 compliant (chipset Realtek 8111C)
- Average power consumption: 6 Watts (24W max.)
- CE, FCC and ACMA compliant
- Storage temperature: -20° to 70°C
- Operating temperature: 0° to 70°C
- Humidity: up to 90%, non-condensing
- Dimensions: 167 x 98,5 x 15 mm
- Weight: 110 g
- Virtual CAPI available
- Optional remote management via beroCloud

ISDN Specifications

- Connects SIP with ISDN
- ISDN Ports separately as TE or NT mode switchable in software (jumper free)
- Termination resistors (100 Ohm) for every port separately configurable
- Layer 2 is Q.921 and Layer 3 is Q.931 (EuroISDN DSS1) compatible
- DSS1 Feature Set: CLIP/No-Screening, CLIR, COLP, UUS, MCID, CD, CNIP AOC-D
- Q.SIG Feature Set: CNIP

Analog FXO Specifications

- Connects SIP to analog for connection to the public telephone network or to an internal analog port of the PBX
- Flash hook
- CLIP, CNIP

Analog FXS Specifications

- Extends analog devices to SIP (telephone, fax, alarm system, EC cash)
- Hold, Retrieve, Transfer / MWI (Stutter, FSK)
- CLIP, CNIP



Need more info?

Please use our support portal or check out our services!
We can help you with training, consulting and development.



ALL COUNTRIES:
+49 (0)30 259389-0



FAX: +49 (0)30 259389-19
INFO@BERONET.COM



GNEISENAUSTR. 44-45
10961 BERLIN
GERMANY

