

Telephony Appliance

Powered by the beroNet Hypervisor



"Our customers have come to rely on the beroNet Appliance's reliability and the flexibility provided by its unique modular design when implementing our software based IP phone system."

Mathias Pasquay, CEO at pascom Netzwerktechnik

OVERVIEW

Designed to last, the beroNet Telephony Appliance is award winning telecommunication hardware designed to run your IP-PBX and telecommunication systems in a single box. Pick from two base models built for small to medium sized businesses.

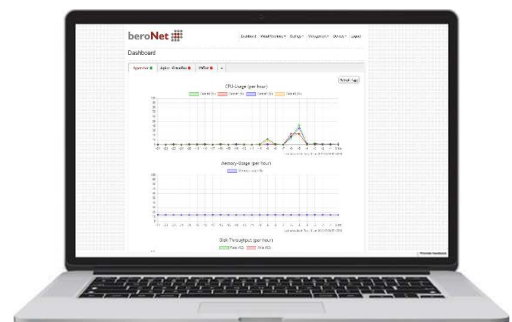
Overview

Energy efficient appliance for your VoIP and UC needs. Use our energy efficient Telephony Appliance to run your IP-PBX system. Powered by less than 25 watts, the Appliance offers you the opportunity to house your IP-PBX and VoIP-Gateway in one device. With no moving parts the beroNet Telephony Appliance is designed to run 24/7 without interruption.



Virtualize your systems and manage them using the beroNet Cloud

The beroNet Hypervisor allows to run multiple operating systems to run on the device at the same time. This creates the opportunity for the beroNet Telephony Appliance to function as the communications hub of an organization with the ability to hold systems such as an IP-PBX, router and CRM. You can register your device in the beroNet Cloud for remote management and monitoring of your virtual machines.



Integrated VDSL2 Card

Use the VoIP-Only-Appliance with an integrated VDSL2 card to combine a router and your IP-PBX in one single device without additional hardware. Get the fastest VDSL2 connection with „Vectoring“. ADSL2+ fallback is also supported.

Integrated VoIP-Gateway for ISDN and Analog connections

Choose the device with an integrated VoIP-Gateway to meet your telephony needs. Add a beroNet VoIP-Card to the device and gain all the benefits of beroNet OS and beroNet VoIP-Gateway modularity. Choose any of our ISDN or Analog modules to ensure compatibility with your current provider or connect your IP-PBX to analog devices.



FEATURES

- Powered by the beroNet Hypervisor
- Compatible with any IP-PBX
- No moving parts
- Cloud managed

TECHNICAL SPECIFICATIONS

- Intel Celeron – Quadcore (N3160) with 1.6 GHz, 2.24 GHz Burst Frequency
- 8GB or 16GB RAM
- 250GB or 500GB SSD
- VT-x and VT-x EPT for virtualization
- VGA, HDMI, Four USB 3.0 Ports
- 2 network interfaces (1 GbE)
- 12V power, less than 25W power consumption
- Fanless cooling

Appliance Version VoIP only

WITHOUT INTEGRATED GATEWAY

| Model | Description |
|------------------|--|
| BNTA22-VO-M | Appliance VoIP only Model „M“ with 8GB RAM, 250GB SSD, Dual NIC |
| BNTA22-VO-M-VDSL | Appliance VoIP only Model „M“ with 8GB RAM, 250GB SSD, Dual NIC, with VDSL Card |
| BNTA22-VO-L | Appliance VoIP only Model „L“ with 16GB RAM, 500GB SSD, Dual NIC |
| BNTA22-VO-L-VDSL | Appliance VoIP only Model „L“ with 16GB RAM, 500GB SSD, Dual NIC, with VDSL Card |

Appliance with Integrated VoIP Gateway

EXPANDABLE WITH ADDON MODULES

| Base Models | Description |
|-------------|--|
| BNTA22-M | Appliance Model „M“ with 8GB RAM, 250GB SSD, Dual NIC and BF400e |
| BNTA22-L | Appliance Model „L“ with 16GB RAM, 500GB SSD, Dual NIC and BF1600e |

| ISDN Models | Description |
|------------------|---|
| BNTA22-2S02FXS-M | Appliance „M“ with BF400e plus 2 BRI/S0 / 2 FXS Module |
| BNTA22-2S02FXS-L | Appliance „L“ with BF1600e plus 2 BRI/S0 / 2 FXS Module |
| BNTA22-4S0-M | Appliance „M“ with BF400e plus 4 BRI/S0 Module |
| BNTA22-4S0-L | Appliance „L“ with BF1600e plus 4 BRI/S0 Module |
| BNTA22-1E1-L | Appliance „L“ with BF1600e plus 1 PRI E1 Module |

| Analog Models | Description |
|---------------|--|
| BNTA22-4FXO-M | Appliance „M“ with BF400e plus 4 FXO Module |
| BNTA22-4FXO-L | Appliance „L“ with BF1600e plus 4 FXO Module |
| BNTA22-4FXS-M | Appliance „M“ with BF400e plus 4 FXS Module |
| BNTA22-4FXS-L | Appliance „L“ with BF1600e plus 4 FXS Module |

Need more info?

Please use our support portal or check out our services! We can help you with digital training (webinars), consulting, development and extended warranty.



The actual product may vary from figure. The information contained herein is subject to change without notice.
Subject to technical changes and misprints. Copyright © beroNet GmbH, All rights reserved.