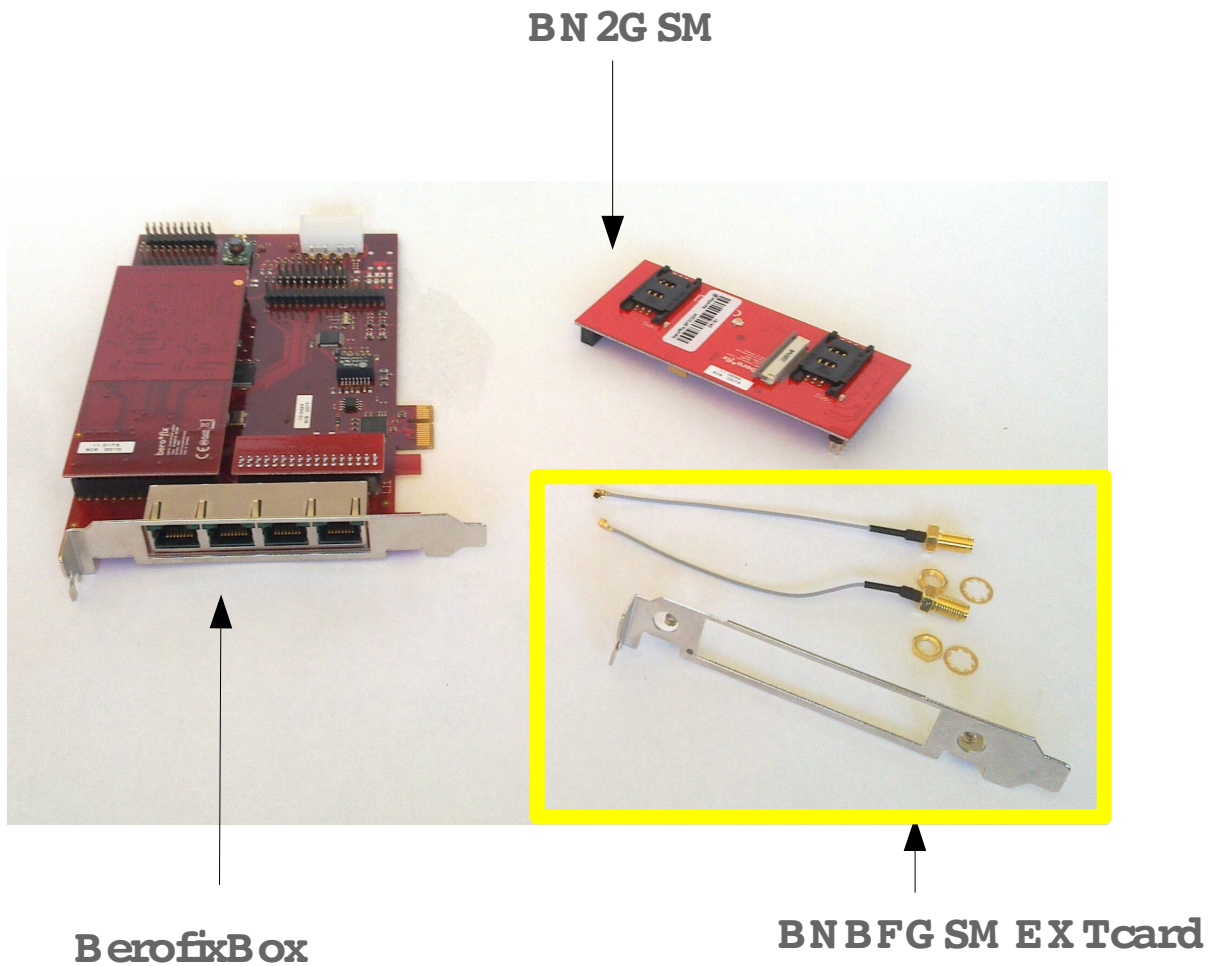
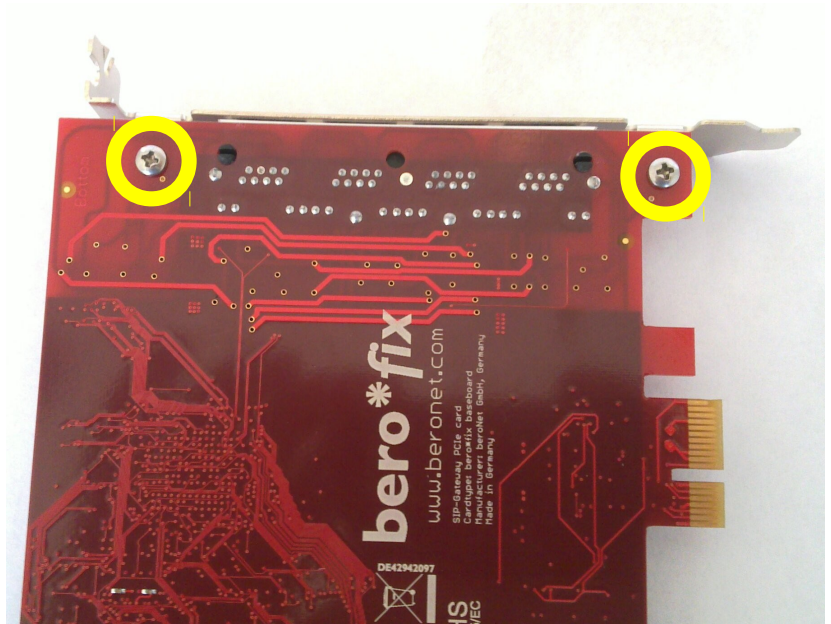


Requirements:

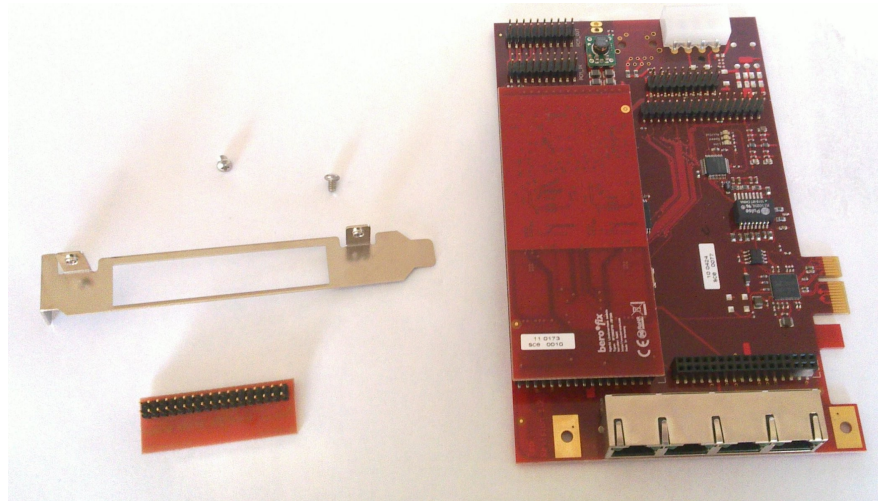
- ▶ BerofixCard
- ▶ BFGSMBracket- Upgrade Kit
- ▶ BN2GSM



1. Unscrew Bracket Screws



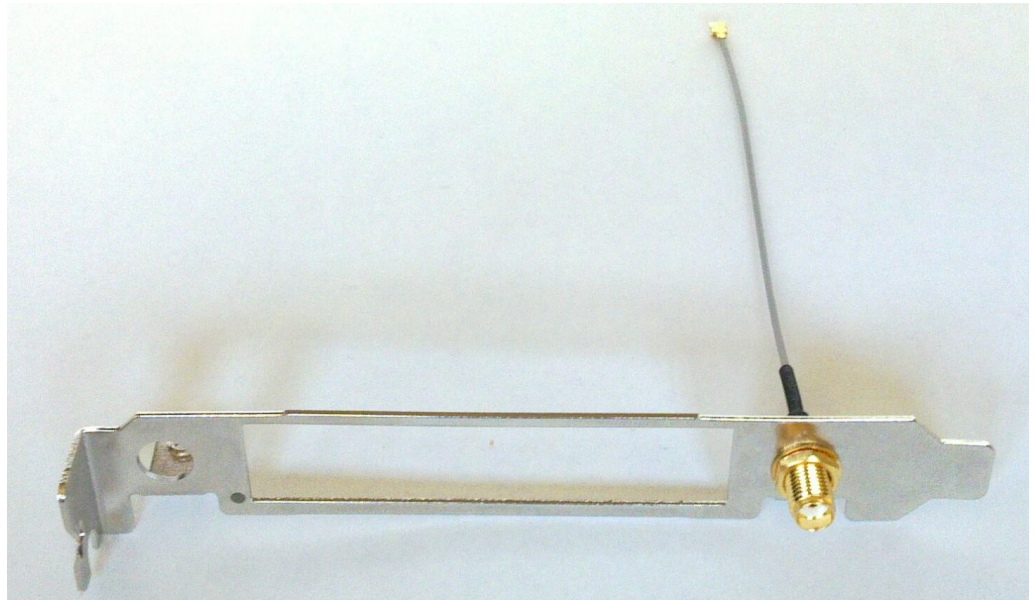
2. Remove BFB ridge if present



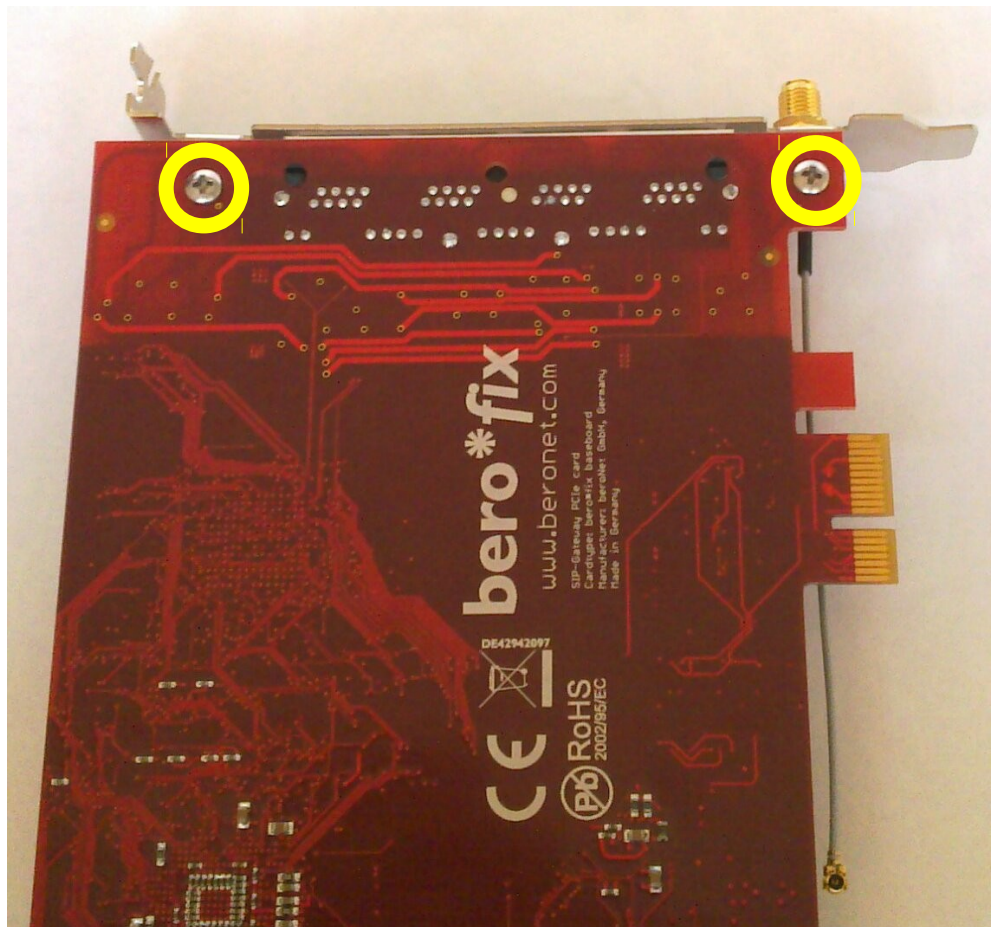
3. Add GSM Module



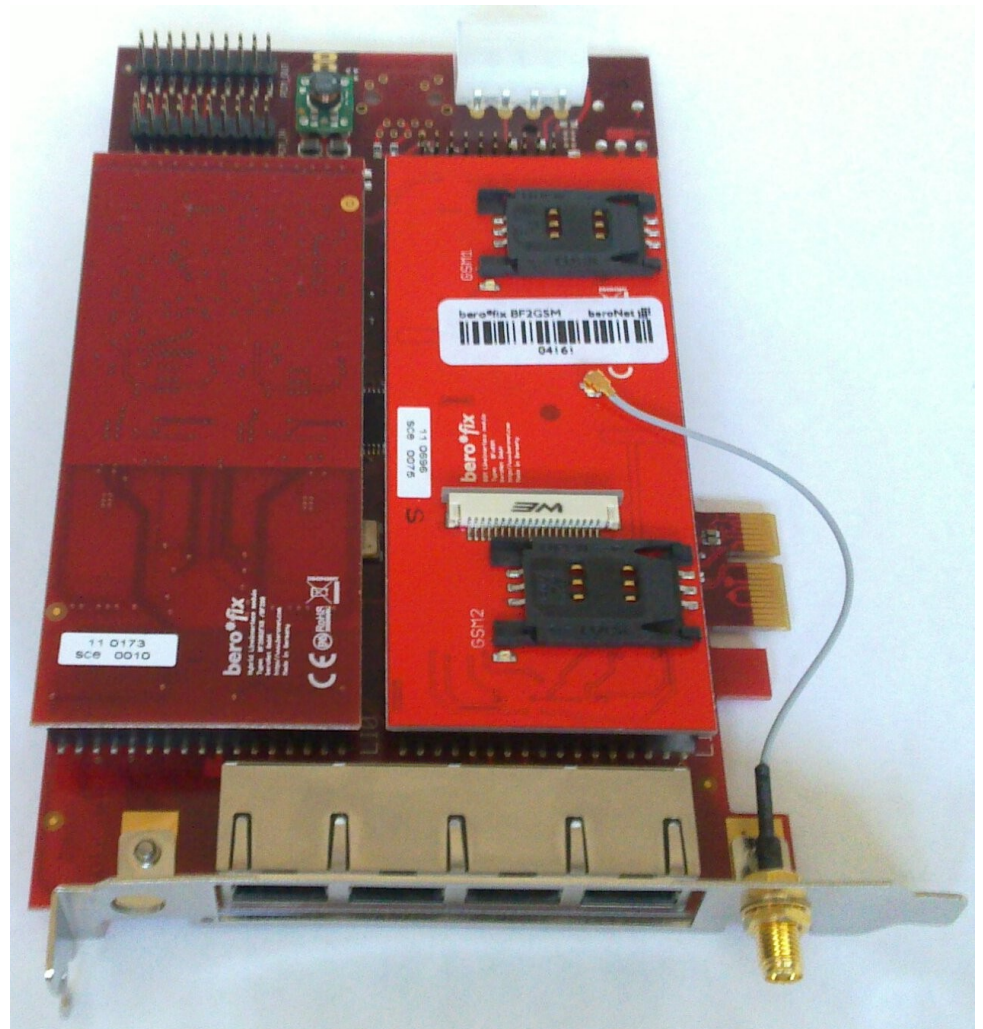
4. Connect Antenna Cable to GSM Bracket



5. Connect Bracket and Card with the Screws



**6. Connect Antenna
Cable to
GSM Module**



7. Insert SIM Card



8. Attach Antenna

